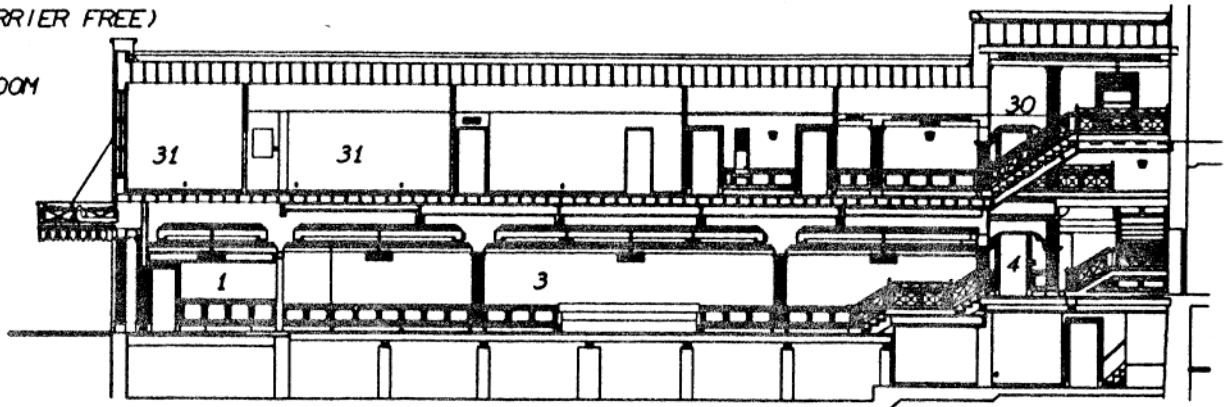
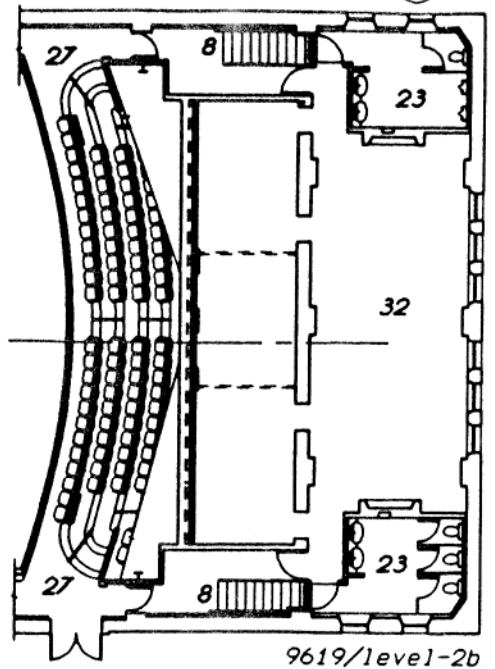


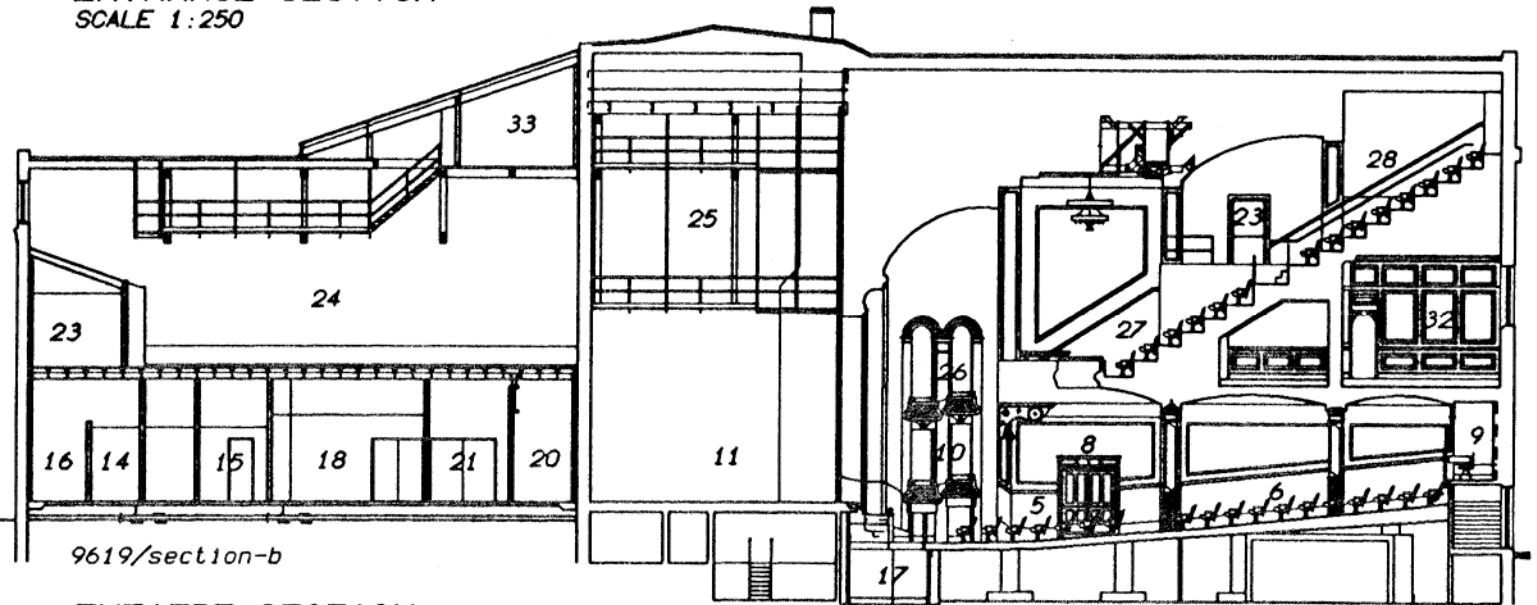
# ROOM LEGEND

- 1 THEATRE ENTRANCE
- 2 BOX OFFICE
- 3 LOBBY
- 4 ELEVATOR (BARRIER FREE)
- 5 LOWER FRONT SEATING
- 6 LOWER BACK SEATING
- 7 CONTROL
- 8 EXIT
- 9 CONTROL
- 10 BOX SEATING
- 11 STAGE
- 12 STAGE PROPS
- 13 DRESSING ROOM
- 14 WASHROOM/SHOWER
- 15 STAR DRESSING ROOM
- 16 LAUNDRY
- 17 ORCHESTRA PIT
- 18 GREEN ROOM
- 19 SUPERINTENDENTS OFFICE
- 20 CROSSOVER
- 21 TECHNICAL OFFICE
- 22 EXIT
- 23 WASHROOM
- 24 PRACTICE ROOM
- 25 PROP FLYWAY
- 26 BOX SEATING
- 27 BALCONY SEATING
- 28 UPPER SEATING
- 29 CONTROL
- 30 ELEVATOR (BARRIER FREE)
- 31 OFFICE
- 32 LOUNGE
- 33 MECHANICAL ROOM

LOUNGE FLOOR PLAN  
SCALE 1:250



ENTRANCE SECTION  
SCALE 1:250



THEATRE SECTION  
SCALE 1:250

CAPITOL THEATRE  
MONCTON, NEW BRUNSWICK